



CONTOUR

PLANNING & ADVISORY

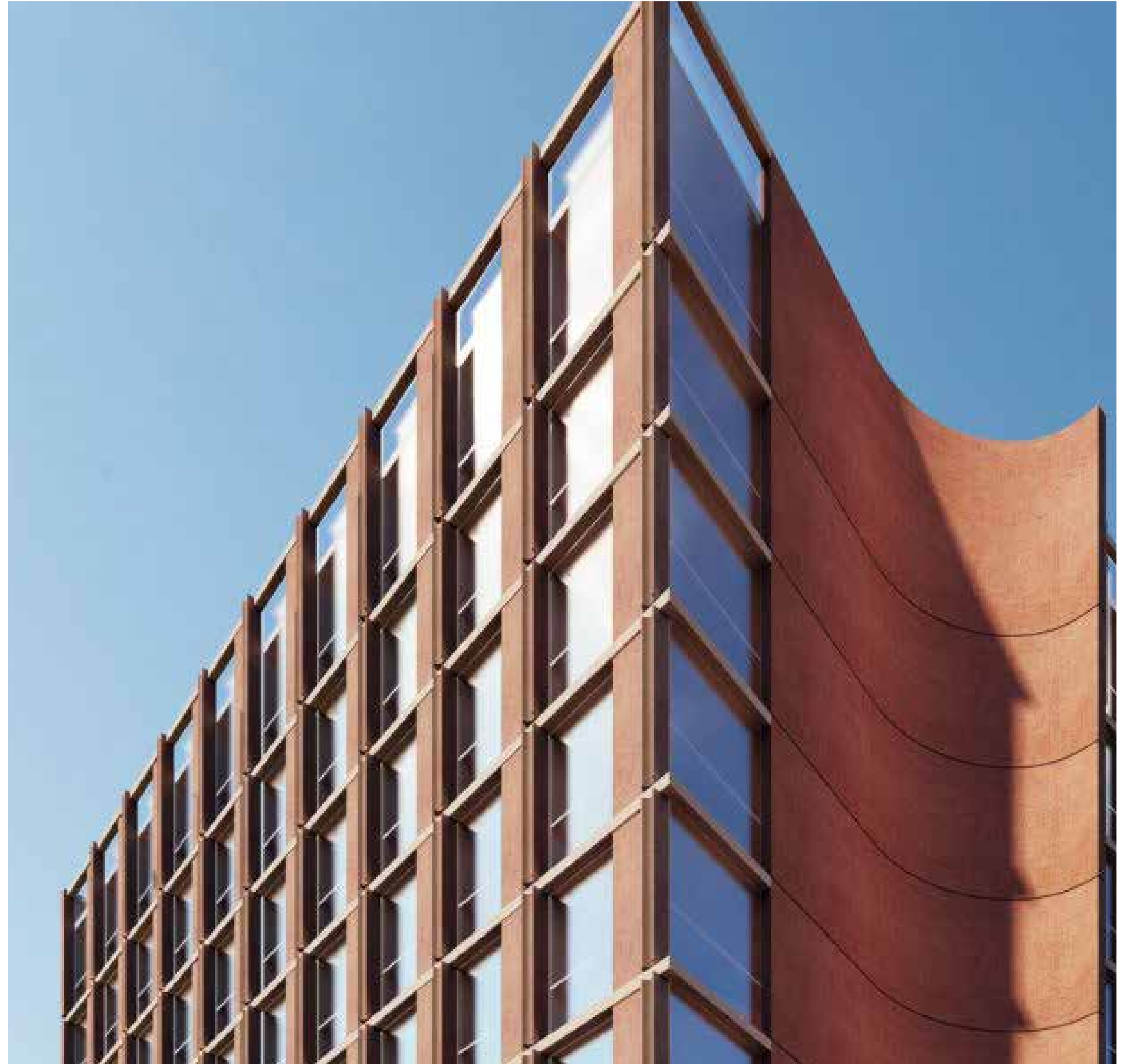
Capability Statement

Contour Consultants Australia Pty Ltd
Level 1/283 Drummond Street, Carlton, Victoria, 3053

www.contour.net.au
mail@contour.net.au
03 9347 6100

Contents

About Us	3
Our Services	4
Our Clients	5
Our Projects	6
Our Experience	15
Our Project Team	26
Contact Information	33

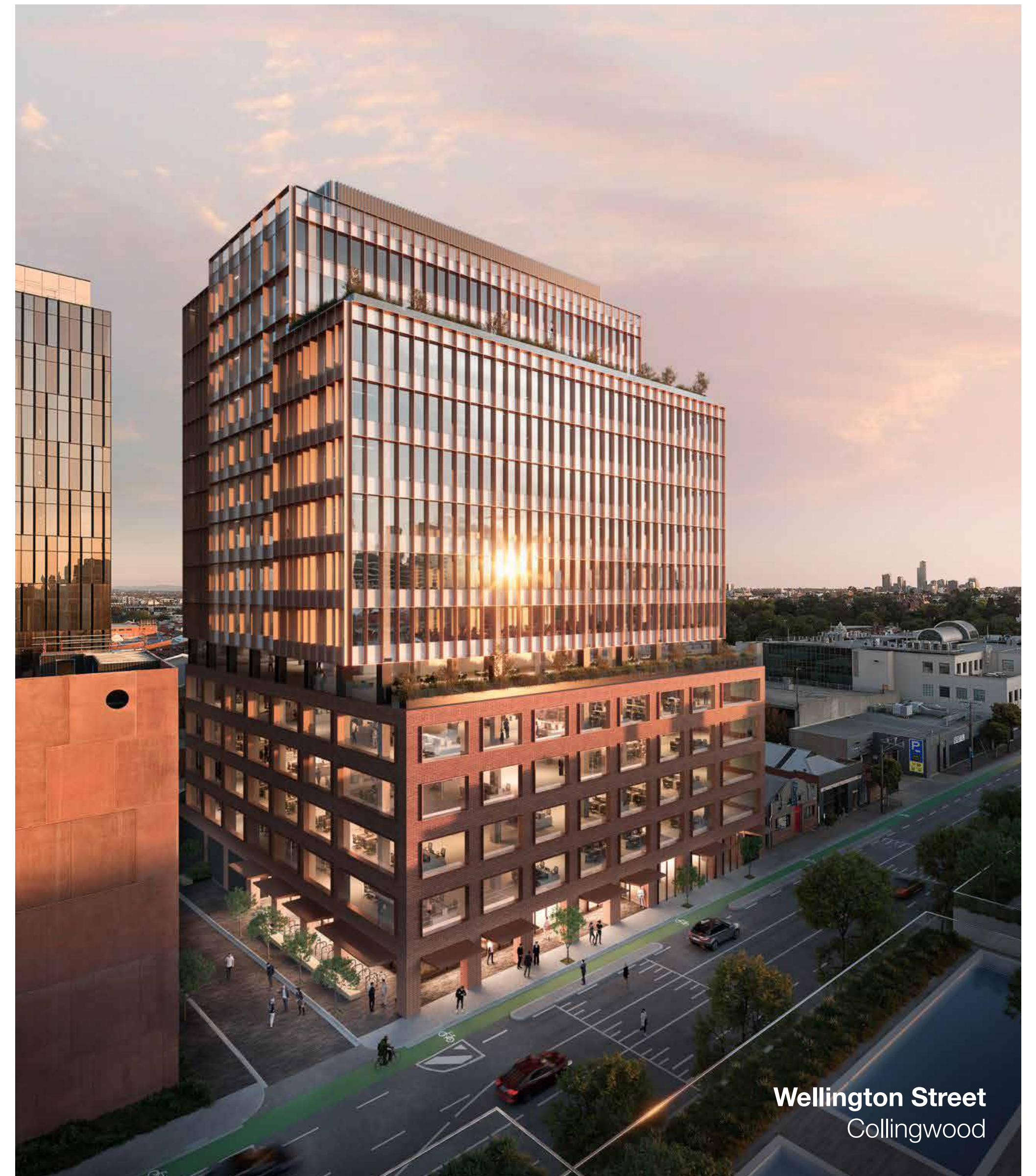


About Us

At Contour, we pride ourselves on delivering unparalleled expertise and exceptional value across all property sectors, from acquisition to occupation. Our diverse team of experienced and passionate professionals, is dedicated to achieving outstanding development outcomes throughout Victoria. With comprehensive coverage of statutory planning and expertise in securing planning permits, we are your trusted partners in shaping Victoria's urban landscape with high-quality town planning advisory and management services.

Founded in 1991, Contour began as a small team. Over time, the company expanded to the 30+ employees that we are today. With a focus on achieving the best outcomes for our clients, the diversity of experience within the team is our greatest strength.

With unrivalled expertise tailored to meet client needs, Contour's advice is our integrity, standing the test. Whether it be due diligence or the Supreme Court, Contour's personal approach and strategic advice has led to clients using Contour again and again for more than 30 years.



Our Services

Our services cover a diverse range of project types, spanning from inner-city apartments and commercial buildings to shopping centers, hospitality venues, mixed-use precincts, Greenfield developments, and industrial parks. We are actively involved in the expansion of health and education services throughout Melbourne and Victoria, collaborating with clients on planning matters for hospitals, universities, and schools. Our comprehensive and innovative town planning advisory services encompass every stage of the project lifecycle, from pre-purchase feasibility assessments to design consultations, planning permit application management, strategy consultations, and the provision of expert evidence in town planning matters before the state's Tribunals and Courts.



01. TOWN PLANNING

Our team offers expert town planning advice and strategic counsel on land use, development, site and master planning issues, guiding clients through the complexities of the process in the most efficient way possible. We distill intricate planning controls and communicate expert opinions clearly, empowering clients to manage their portfolios effectively with strategic thinking tailored to statutory planning needs.

02. APPROVALS

We specialise in managing the approvals process, serving as advocates for our clients with government agencies, authorities, and stakeholders. From development approvals to navigating regulatory hurdles, we ensure a smooth path forward for projects, representing our clients' interests every step of the way.

03. COMMUNITY

Our services encompass project coordination, community consultation, and environmental planning assessment, ensuring that projects not only meet regulatory requirements but also align with community needs and environmental considerations. By engaging stakeholders and assessing impacts comprehensively, we foster sustainable development practices.

04. REPRESENTATION

With expertise in expert witness appearances before tribunals and courts, including VCAT expert evidence, we provide robust representation for our clients' interests. Whether advocating for project approvals or defending against challenges, we leverage our knowledge and experience to achieve favorable outcomes.

05. SOLUTIONS

We specialize in negotiating complex planning problems and resolving conflicts through skilled negotiation and mediation. By identifying common ground and facilitating constructive dialogue, we help clients navigate challenges and achieve mutually beneficial solutions in the planning process.

Our Clients

Our portfolio of clients includes the following and more:

- | | | | |
|--------------------------|-----------------------------|------------------------|-----------------------------|
| AHG | Cremorne Properties | Lendlease Developments | Shayher Group |
| Alpha Partners | Deluca Property Group | Linfox Property Group | Skylife |
| Alex Fraser Group | Dexus Property Group | Little Projects | South Haven Group |
| Amex Corporation | Gibson Property Corporation | MAB Corporation | Stockland Developments |
| AMP Capital | Geotech Acciona | Millieu | Trenerry Property Group |
| Barro Group of Companies | Glenvill | Mirvac | Tricare |
| Bensons Property Group | GPT Group | Neometro | The University of Melbourne |
| Bunnings Group Limited | Greystar | Newmark | United Aged Care Services |
| Cedar Woods | Grocon | Orica | Vicinity Centres |
| Charter Hall Group | Gurner™ | Peet Limited | Westfield / Scentre Group |
| Citiplan | Healthscope | Perri Projects | Woolworths |
| CityWide | Hines | Piccolo Developments | YWCA |
| Clarendon Property Group | HUB Property Group | QIC | |
| Coles Group | Icon Developments | R Corporation | |
| Colonial First State | ID Group | Riverlee | |
| Costa Fox | Kokoda Property | Salvo | |



Our Projects



OUR PROJECTS

Residential / Mixed Use

Contour's experience with residential and mixed use development is second-to-none. Our experience includes having provided strategic advice and secured approvals for some of the largest and most complex housing projects in Victoria, including overseeing the delivery of multi-tower projects in the Central City, Docklands, Southbank, and Fishermans Bend, to high-quality medium density development, and growth areas on the metropolitan fringe, our expertise is all encompassing and delivers exceptional results for our clients.

Examples of residential projects we have worked on include:

- Hawksburn Place – Williams Road, Prahran
- Albert Place – Bowen Crescent, Melbourne
- Former Pentridge Prison Complex – Coburg
- Ikebana Apartments – 130-154 Dudley Street, West Melbourne
- Oxley Apartments – 46-74 Stanley Street, Collingwood
- University Hill Mixed Use Development
- Windsor Hotel Redevelopment, Melbourne
- Valley Lake Residential Estate
- Banbury Village, Footscray
- Point Lonsdale Residential & Waterways Development Project
- Williams Landing Development Plan
- Melbourne Racing Club Masterplan
- Port Phillip Housing Association / MAB Project, Moorabbin
- Hotel Sorrento
- 1-59 Greigs Road, Truganina (Mount Atkinson)
- Greenvale Lake East
- Merrifield Living
- Victoria & Bourke, Camberwell



Victoria & Bourke
Camberwell



OUR PROJECTS

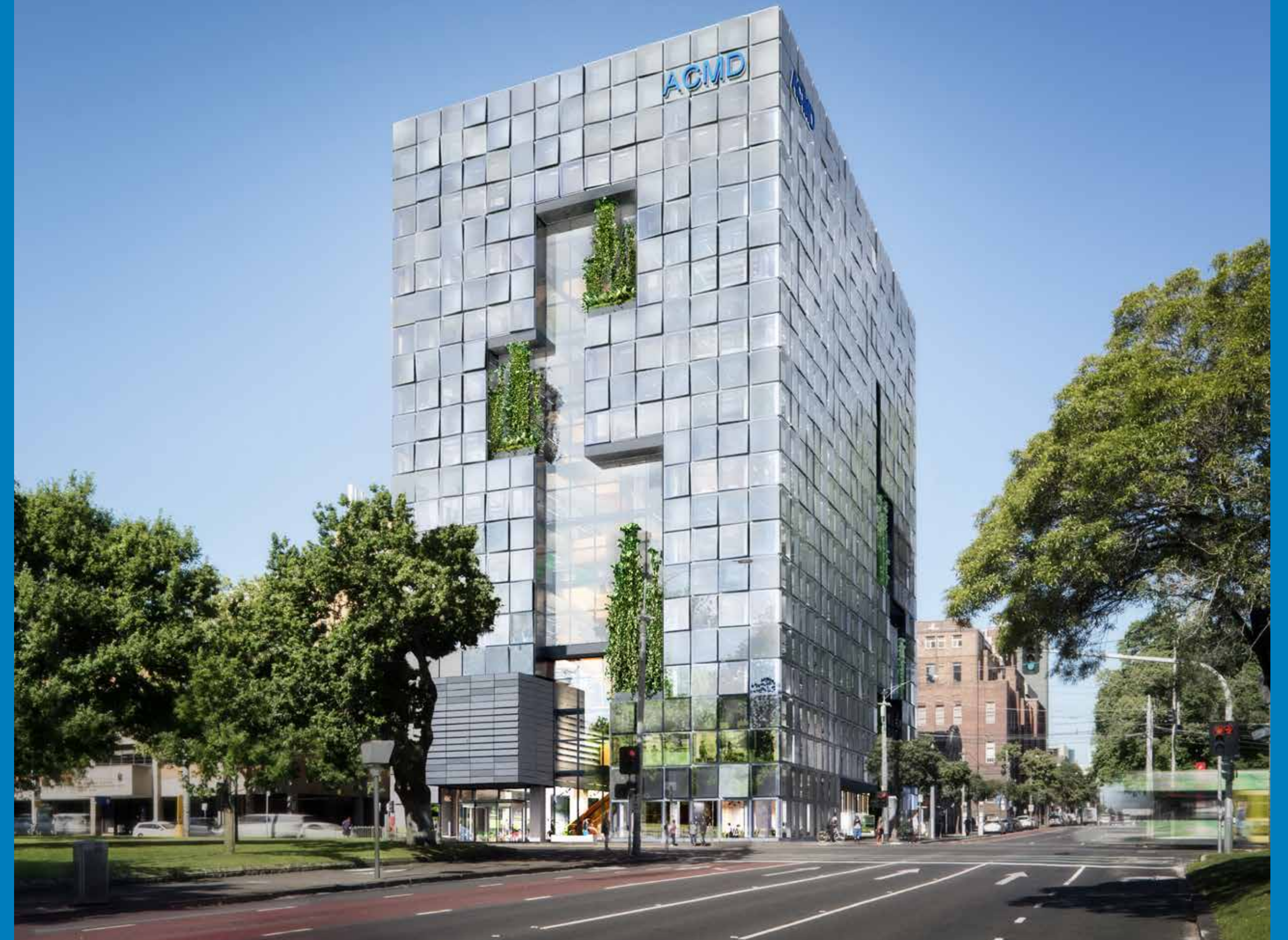
Health & Aged Care

Contour plays a significant role across the health services sector, and has assisted major hospitals, aged care, retirement living and other health and medical providers with the delivery of new facilities, major upgrades, and expansions, including master planning, strategic advice and securing development approvals.

Examples of health projects we have worked on include:

- Berwick Community Hospital
- Cabrini Hospital
- Delmont Private
- Epworth Eastern Hospital
- Epworth Hospital
- Freemasons Hospital
- Geelong Private Hospital
- John Fawkner Private Hospital
- Tricare – Williams Landing
- Tricare – Brunswick
- Knox Private Hospital
- Linacre Private Hospital
- Northpark Private Hospital
- Peter MacCallum Cancer Institute
- St. Vincent's Hospital
- Waverley Private Hospital
- Healthscope Prahran
- Ramsay Epping

Aikenhead Centre for Medical Discovery (ACMD) St Vincent's Hospital Melbourne



OUR PROJECTS

Education

Contour boasts extensive experience in offering master planning guidance and town planning counsel to support expansions across numerous university campuses and schools in metropolitan Melbourne and throughout Victoria. We have an ongoing role in providing tailored town planning advice to educational institutions and schools.

Examples of education projects we have worked on include:

- Australian Catholic University
- Ballarat and Clarendon College
- Brighton Grammar
- Brighton Secondary College
- Deakin University Burwood
- Deakin University Geelong
- Deakin University Warrnambool
- Haileybury College; Castlefield, Edrington, Keysborough & Melbourne City campuses
- Kangan Batman TAFE, Docklands
- Kilvington Grammar
- King David School
- Mentone Grammar
- Mount Scopus Memorial College
- Ruyton Girls' School
- St Bede's College
- St Kevin's College
- The University of Melbourne
- Victoria University, Footscray
- Waverley Christian College
- Wesley College, Glen Waverley and St Kilda Road campuses
- Yarra Valley Grammar



The University of Melbourne
Parkville



OUR PROJECTS

Sustainability & Renewables

Contour takes pride in its contributions to various sustainability, renewables, and climate change-focused development and land initiatives as we push to decarbonise. Our portfolio includes pioneering residential projects like The Commons and Nightingale Preston, alongside involvement in ambitious projects such as the world's tallest timber apartment building and Australia's first Cross Laminated Timber (CLT) constructed structure. Additionally, we have played a significant role in the growing sectors of solar farm, battery farm and renewable energy projects in metropolitan and regional areas.

Examples of sustainability & renewables projects we have worked on include:

- The Commons - Florence Street, Brunswick
- Nightingale, Preston
- Forte by Lend Lease, Melbourne
- Elwood Green Apartments, Elwood
- Stanhope Solar Farm, Stanhope
- Deakin University Solar Farm, Waurm Ponds
- Progress Power Solar Farm, Dingley South



OUR PROJECTS

Hospitality

Contour possesses extensive expertise in overseeing and facilitating a wide variety of hospitality projects, including some of Victoria's best and most iconic hospitality venues, encompassing inner-city bars, nightclubs, restaurants, breweries, coffee roasteries, wineries, and versatile multi-purpose venues. Our hands-on experience in managing such diverse ventures, coupled with a deep understanding of the unique nuances, and leasing and licensing requirements of these establishments, has proven invaluable to our clients.

Examples of hospitality projects we have worked on include:

- Stomping Ground Brewery
- Levantine Hill Estate
- St Hubert Vineyard
- Tarrawarra Estate
- Jetty Road Brewery
- Ten Minutes by Tractor
- Axil Coffee Roasters
- Burnley Brewery
- All Press Melbourne Roastery
- Arbory Bar & Eatery



Arbory Bar & Eatery
Melbourne



OUR PROJECTS

Retail

Contour offers vast expertise in overseeing and negotiating development approvals for Australia's largest retailers. Our extensive experience, coupled with comprehensive knowledge of retail planning intricacies, has been cultivated through involvement in numerous major retail projects and rollout programs for leading retail chains spanning many years. Our valued expertise and strategic advice is not only appreciated by our clients but also highly regarded by planning authorities, ensuring smooth and successful outcomes for retail developments.

Examples of retail projects we have worked on include:

- Westfield Shopping Centre Expansions – Knox, Doncaster, Plenty Valley, Fountain Gate, Southland, Airport West & Geelong
- The Glen Shopping Centre, Glen Waverley
- Dan Murphy's roll-out
- Bunnings stores in various locations
- Woodgrove Shopping Centre
- South Morang Hyundai
- Stockland - Lilydale, Point Cook, Wendouree and Traralgon
- University Hill Town Centre
- QIC - Williams Landing, Eastland, Watergardens, Merrifield City, Coburg Central



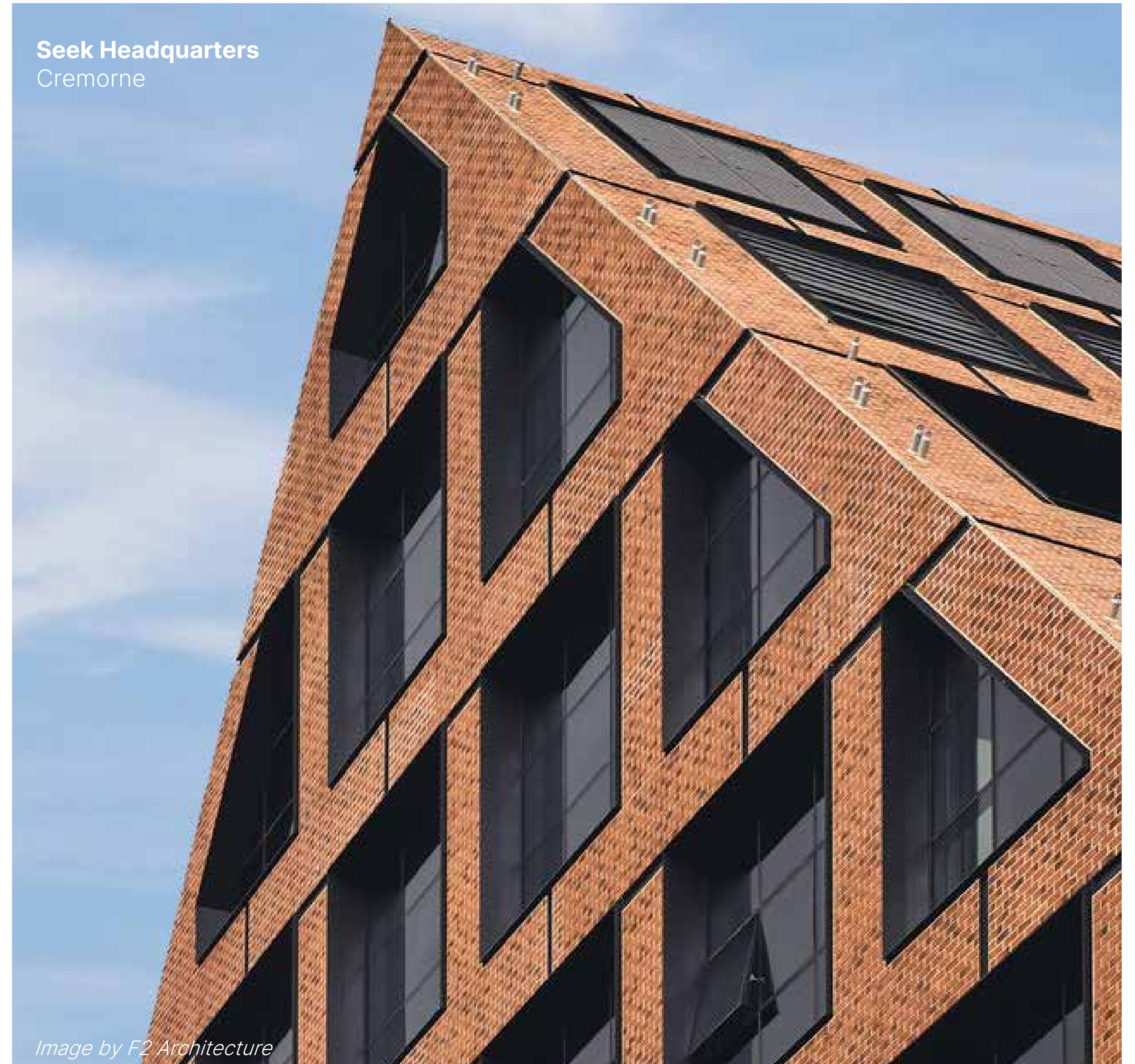
OUR PROJECTS

Commercial / Industrial

Contour boasts extensive expertise in managing and negotiating development applications for significant commercial and industrial developments. This includes overseeing and facilitating the establishment of various business parks, industrial estates, and manufacturing plants for a diverse clientele. Our track record speaks to our proficiency in delivering tailored solutions for complex commercial and industrial projects.

Examples of commercial projects we have worked on include:

- Lendlease Melbourne Quarter
- Lendlease Victoria Harbour
- Alliance Business Park, Epping
- Westgate Express MAB
- Biodiversity Business Park, Epping
- Bosch Australia Head Office, Clayton
- Ferntree Business Park, Notting Hill
- Metrolink Business Park, Campbellfield
- Eastlink Business Park
- Launceston Airport Business Park
- Merrifield Employment Precinct
- Orbis Business Park, Ravenhall
- West Industry Park, Truganina
- Seek Headquarters, Cremorne
- Hanwha Defense Australia, Avalon



OUR PROJECTS

Infrastructure

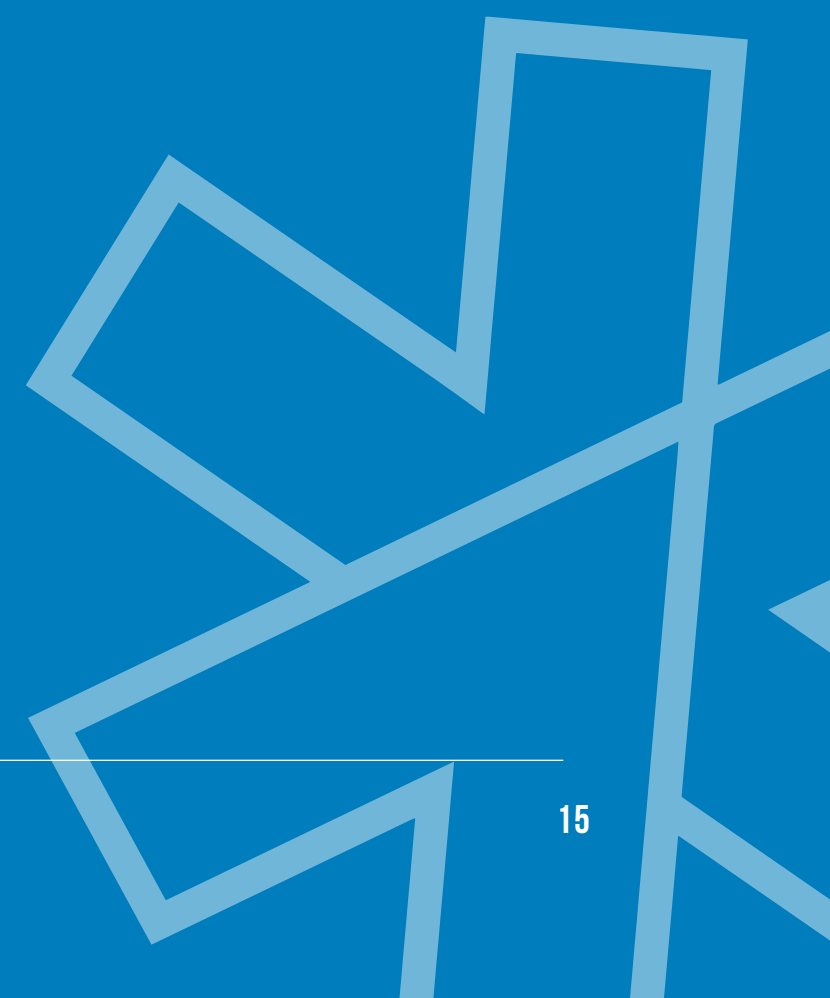
Contour works across a number of major infrastructure projects, including rail infrastructure, landfill sites, concrete batching plants and recycling facilities as well as sports and community facility projects for semi-government and corporate clients.

Examples of infrastructure projects we have worked on include:

- Materials recycling and refuse transfer facilities at Clarinda, Laverton and Epping
- Landfills at Tuerong, Callignee South, Lyndhurst and Sunbury
- Concrete batching plants at Marshall, Point Wilson and Woody Hill
- Wonthaggi Desalination Plant
- Tabcorp Park Harness Racing Facility, Melton
- Maryborough to Ballarat Passenger Rail Services Project (V/Line)
- Contaminated Soil Treatment Facility, Dandenong South
- Green Waste Composting Facility, Sunbury
- Solid inert landfill, Cranbourne South
- Moonee Valley Racing Club (MVRC)
- Dendy Pavilion, Brighton
- Queenscliff Ferry Terminal, Queenscliff



Our Experience



OUR EXPERIENCE

ABC Elsternwick

THE PROJECT

The site was the home of the ABC Studios from 1956 until 2017 and is encumbered by a site specific Heritage Overlay, restrictive covenant and mandatory building heights.

Contour was engaged to prepare the strategy to facilitate demolition of the existing buildings, development of a Heritage Interpretation Strategy, liaison with the National Trust to vary built form parameters associated with a covenant and management of the Council planning Permit process.

The redevelopment of the ABC Elsternwick site transforms 1.174 hectares into a multi-building residential community comprising 175 dwellings with 800 square metres of public open space.



OUR EXPERIENCE

The Conti, Sorrento

THE PROJECT

Our client purchased this land with the development partially commenced and with a vision for a high quality addition to the Sorrento township.

The key objectives for the redesign of the approved hotel was activation of the street frontages, improved way-finding within the precinct, an improved car parking and access strategy and a long-term financially viable hotel operation. The amendments included an additional 38 hotel rooms, an additional 28 car parking spaces, a new day spa wellness offering, roof-top pool deck, and redesign of various built form elements. A new outdoor dining facility was approved for Ocean Beach Road, allowing for year-round use by patrons and ensuring activation of this important part of Ocean Beach Road.

Contour assisted the client group with the navigation of the planning permit amendment process, including leading a wider project team, engagement with stakeholders and involvement in a VCAT process where settlement was reached with the various parties. As a state-significant heritage property, there were a range of factors that required integration across the heritage and planning approval frameworks.



OUR EXPERIENCE

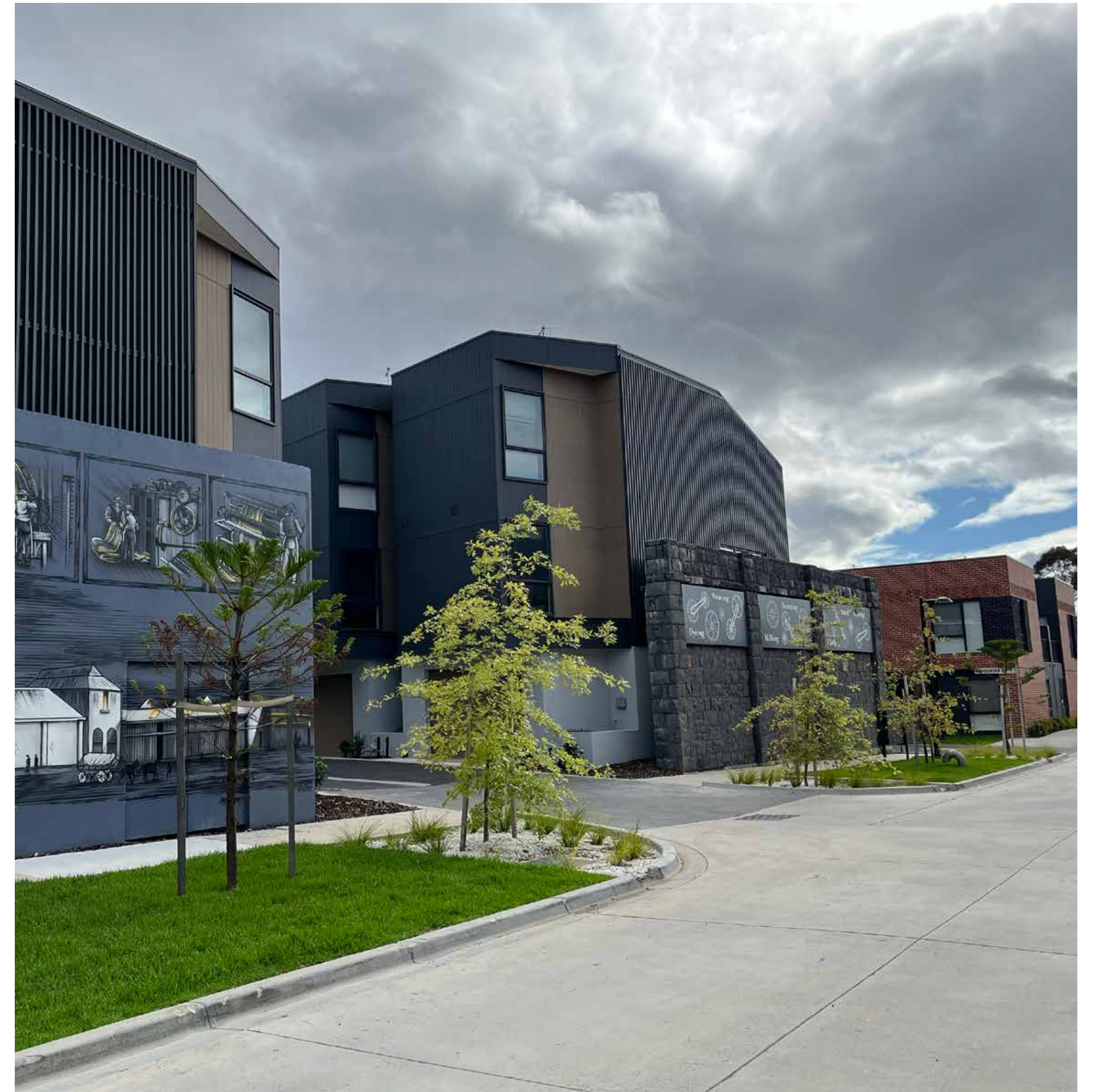
Yarraville Place

THE PROJECT

'Yarraville Place' comprises 98 two-three storey townhouses. The original site was occupied by the Melbourne Woollen Mills Factory which dated back to the 1860's; the redevelopment of the site included the retention and restoration of the historic bluestone walls and a modern interpretation of the saw-tooth roof. The completed development includes heritage interpretation elements, such as an entrance sign and mural.

Contour was the town planning representative for both the development plan approval and the subsequent planning application. Aside from the heritage considerations and those typical to a planning application, the project included considerations to a land-swap agreement, intersection upgrade works, site remediation and rail interface matters.

The project also featured in the Maribyrnong City Council's Sustainable Living Maribyrnong for its commitment to sustainability, including the installation of solar panels on every townhome.



OUR EXPERIENCE

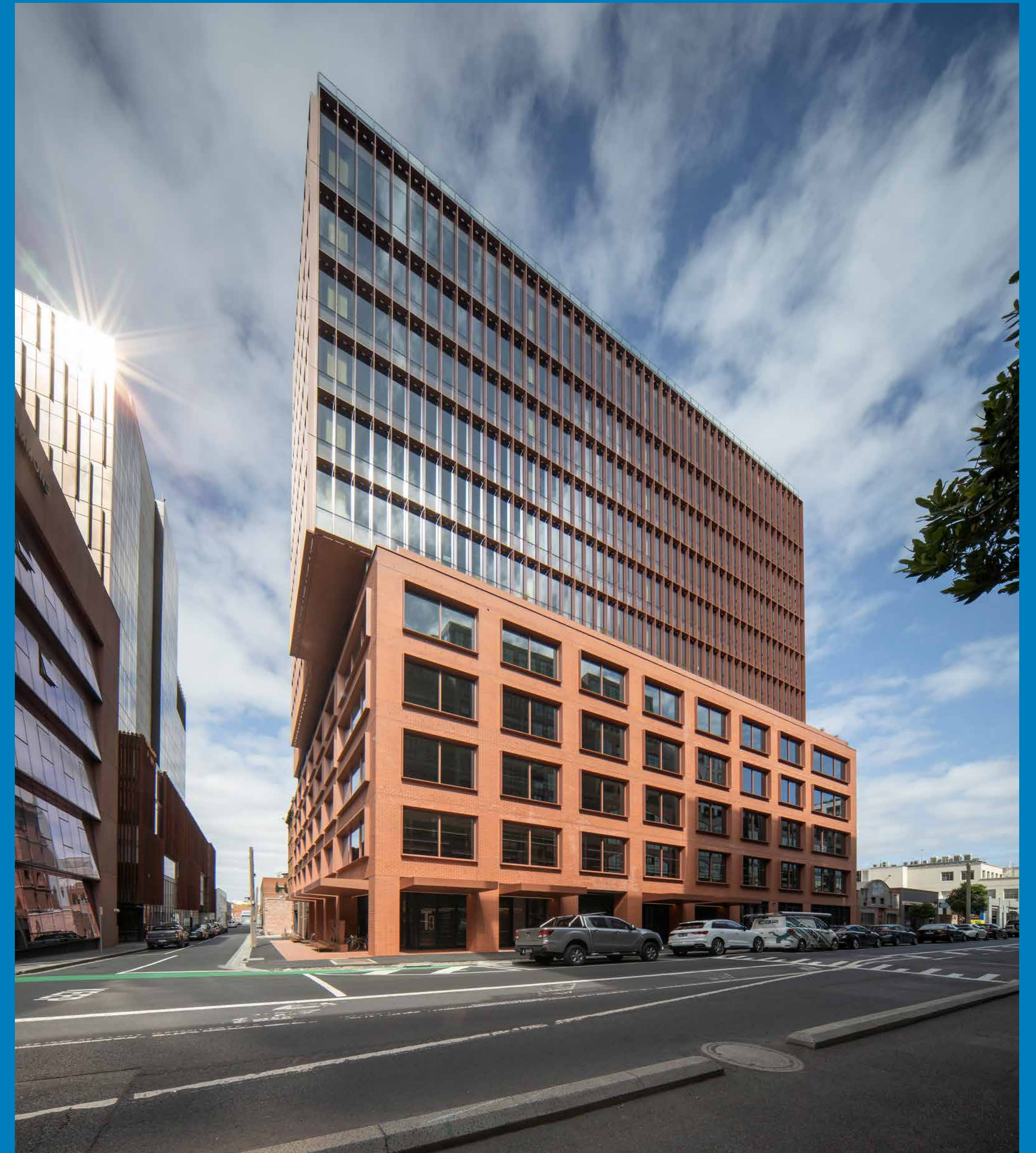
36-52 Wellington Street

THE PROJECT

Hines 'T3 Collingwood' project at 36-52 Wellington Street was Hines' first project in Victoria and is one of the tallest mass timber office buildings in Melbourne.

Designed by Jackson Clements Burrows architects and employing an innovative cross-laminated timber (CLT) construction method, this 15-storey mixed-use / office building comprises over 18,000m² of premium office floorspace, two food and drinks premises and public realm upgrades.

Contour secured approval for the project from the Minister for Planning through the Building Victoria's Recovery Taskforce.



OUR EXPERIENCE

Malvern Collective

THE PROJECT

'Malvern Collective' comprises two mixed-use buildings, one 17 storeys and one 11 storeys (above combined basement levels), which encompass a mix of land-uses, with residential apartments within the upper levels and the podiums including office floorspace, refurbishment of an existing hotel, cafés, and shops including a Woolworths Metro.

Contour was the town planning representative for the planning application, which came with

complexities including considerations to existing use rights, heritage, road discontinuance, and design of public realm improvements in consultation with a number of key stakeholders.

The project will result in a vibrant mixed-use community, tied together with a new central public plaza and new and improved public realm adjacent to Malvern Train Station.



OUR EXPERIENCE

Geelong Convention & Exhibition Centre

THE PROJECT

Contour provided planning advice in support of a project bid and managed the approval process on behalf of Plenary and Development Victoria.

Funded by the Geelong City Deal, the GCEC will feature a 1,000-seat venue, two large exhibition spaces, meeting rooms, conference facilities and flexible event spaces, a new 200-room Crowne Plaza hotel, an 18,000m² mixed use development, new retail spaces, hospitality offerings, and a variety of public realm upgrades, including a large public plaza which will become a feature of the Geelong waterfront.

Learn more about this project [here](#).



OUR EXPERIENCE

Carlton Football Club Redevelopment

THE PROJECT

The Carlton Recreation Ground has served as the home of the Carlton Football Club where VFL and AFL home and away games were played on a weekly basis for most of last century. It continues to be the home of the Carlton Football Club with a range of gameday, training facilities and complementary sports, training, recreation, cultural and education uses.

The project included the partial redevelopment of the ground to provide for elite training facilities, new administration areas, new game day and

broadcast facilities, and to provide a home for the AFLW.

Contour was engaged to prepare the planning strategy associated with the delivery of the project, which included the preparation of a Planning Scheme Amendment, amendments to the Carlton (Recreation Ground) Land Act 1966 and liaison with numerous local and state government departments.



OUR EXPERIENCE

Burnham Beeches

THE PROJECT

Burnham Beeches is a State-significant heritage property in Sherbrooke in the Dandenong Ranges. Unoccupied for many years, the site is to become a world-class accommodation and hospitality precinct, developed by Burnham Beeches Investments, lead by Trenerry Property.

The site will host a major restoration of the Alfred Nicholas mansion which was constructed in the 1930s. It will be occupied by hotel suites and overlook the adjoining Alfred Nicholas Memorial Gardens. Elsewhere on the site will be hilltop cottage-style accommodation; glamping units; function spaces; wellness facilities including a pool house; and hospitality uses. Landscaping works throughout the site will focus on sustainability, productive gardens, and bushfire management.

The site was rezoned by Council some time ago to facilitate a residential hotel and resort facilities, and our involvement in the project has been to lead the project team alongside the client and Woods Bagot Architects to facilitate major amendments to the previous planning permit that governed the site. Our work has included multiple community consultation workshops held on the site; liaison with key stakeholders including the CFA; and management of a complex range of planning controls including environmental significance; tree management; erosion; bushfire; and heritage.



OUR EXPERIENCE

Arcare, Balnarring

THE PROJECT

The development of quality aged care within our community is essential to supporting our population through different stages of their life and ensuring they can continue to live within the community they are familiar with or stay close to family.

Arcare, Australia's largest privately owned aged care provider, has been developing a range of facilities across Victoria, New South Wales, Queensland and the ACT for almost three decades and now has 52 facilities operational.

Contour's partnership with Arcare has seen several aged care facilities approved and developed across metropolitan Melbourne and regional Victoria, with Arcare Balnarring being a fine example of the site responsive approach taken for each project.

The Balnarring site required a highly sensitive built form design and siting to ensure the existing native vegetation that is a feature of the land was protected and the architecture responded to the character of the Balnarring area and surrounding properties.



OUR EXPERIENCE

Merrifield City

THE PROJECT

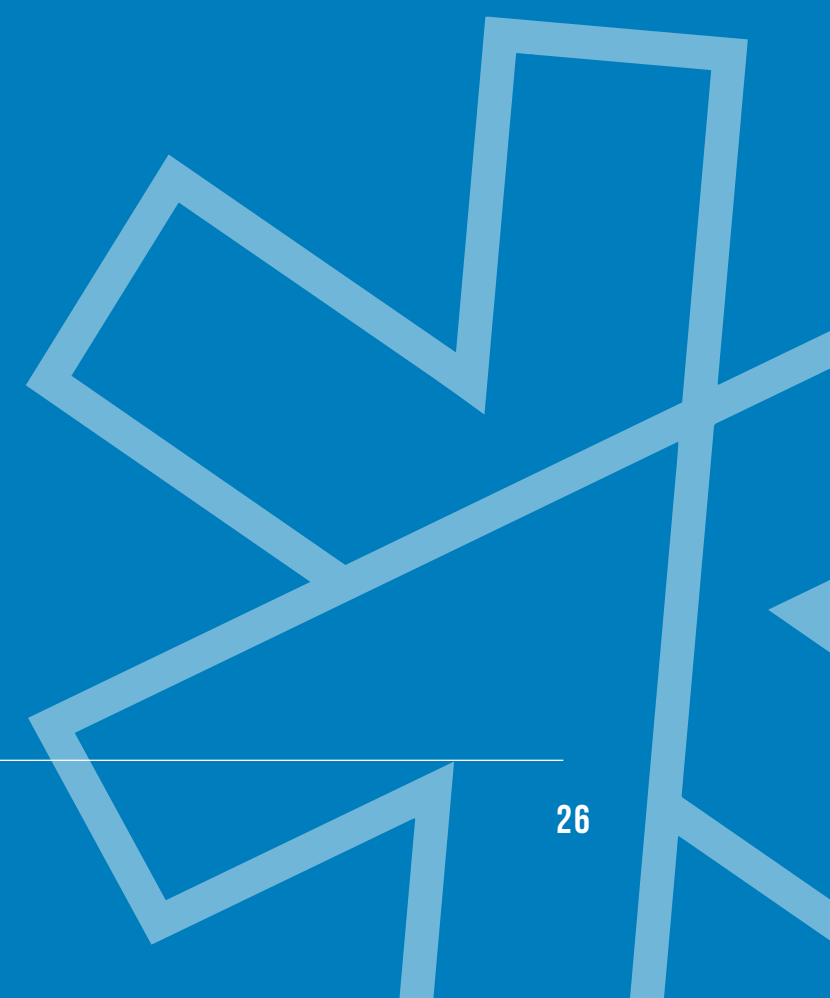
Contemporary retail and commercial centre providing the first stages of the town centre at Merrifield.

Contour has been involved from the development of the vision, strategic planning and urban design framework through to the delivery of the early stages of this exciting 30 hectare project. An expanding town centre that is evolving to

provide a diverse range of uses for the growing Merrifield/Mickleham Community. The project includes negotiating the details of the sustainable town centre to provide convenient lifestyle and amenity together with A-grade multi story office accommodation.



Our Team





Our Team



MARCO NEGRI
MANAGING DIRECTOR

Marco worked in local government and in senior managerial roles for over 15 years before joining Contour in 2002.

Marco is a renowned expert witness at tribunal and panel hearings and spends the majority of his time in court.

His areas of expertise span a number of sectors including, among many others, complex compensation cases. Renowned for his level head and respected, measured opinion, Marco is one of the most requested expert witnesses at VCAT.

Qualifications
B App Sci (Planning), Grad Dip (Planning and Design), PIA



SIMON GILBERTSON
DIRECTOR

Simon joined Contour in 2013 following five years practicing in the private sector.

Simon's confident and energetic approach to tackling complex and contentious large-scale developments, including precincts within Melbourne's Docklands, has seen him achieve outstanding planning outcomes for his clients. His personable yet methodical approach means he is well-respected in the legal fraternity and development community for his sharp advice and attention to detail.

Qualifications
BUPD, VPELA



PATRICK BRENNAN
DIRECTOR

Patrick has been a practicing town planner since 2005, with experience in the public and private sectors across Australia and the UK.

Patrick's confident, composed and well-considered approach to planning has made him highly respected within the industry by private sector clients, government authorities and the legal fraternity. He drives planning applications for complex major redevelopment projects and large-scale rezonings, provides strategic advice, and has achieved exceptional outcomes for major clients within the firm.

Qualifications
B App Sci (Planning) (Hons), VPELA



TIM MCBRIDE-BURGESS
DIRECTOR

Tim's expertise and strategic mindset allow him to primarily focus on large scale inner city commercial and residential projects. His ability to manage large project teams and successfully navigate complex planning proposals has gained him a reputation as one of the resounding talents of the industry.

His balanced approach to planning means that he is a valued and in demand expert witness at VCAT and well-respected amongst the legal fraternity.

Tim is a current member of the Board of the Victorian Planning and Environmental Law Association (VPELA).

Qualifications
B App Sci (Planning), B Soc Sci (Environment), VPELA



LISA STUBBS
DIRECTOR

Lisa joined Contour in 2003 and was appointed as a Director in 2016. Lisa specialises in providing strategic and statutory advice for a diverse range of planning matters to the firm's clients across complex commercial, industrial, retail and institutional projects.

Lisa's expertise in complex projects such as schools, hospitals and industrial precincts has seen her work across some of Victoria's most significant developments. Her results-driven approach means she leads large project teams to drive exceptional outcomes across projects including schools, shopping centres and medical precincts, and will go the extra mile to ensure complex applications can be approved.

Lisa is a former member of the Board of the Victorian Planning and Environmental Law Association.

Qualifications
BUPD (Hons), VPELA

Our Team



VAUGHAN CONNOR
DIRECTOR

Vaughan has been a practicing town planner since 1989 and a director at Contour since 2003.

Vaughan's expertise sees him primarily working with large institutional and private developer clients, driving outcomes for significant major mixed use projects and retail development.

Known for his strategic approach to projects and negotiating skills, Vaughan uses his outstanding knowledge of policy and statutory frameworks to deliver the best outcome for his clients. Vaughan's passion for his chosen profession is palpable and his clients appreciate his approach to driving their planning approval requirements.

Qualifications
BTP, PIA



SHEM CURRY
DIRECTOR

Shem joined Contour in 2017 and has been working as a town planner in both the private and public sectors since 2008.

Shem is intent on facilitating great planning outcomes and this is evident from the list of successful projects which have been delivered following his involvement. Shem's experience in both urban and greenfield development is a unique planning combination and one which has gifted him with the knowledge and flexibility to deal with a broad range of planning applications.

With his natural strategic thinking Shem will map out a project strategy to place the proposal in the best position to obtain approval, while his 'cool under pressure' approach allows quick adaptation or evolution of the strategy if required through the progression of the project.

Qualifications
B App Sci (Planning), VPELA



MELINDA CATLOW
DIRECTOR

Melinda has over 30 years of experience having joined Contour in 1995, after first working in local government in both statutory and strategic planning.

Melinda's expertise lies in her ability to deliver successful planning outcomes for complex projects, including large institutional and master-planned developments.

Her extensive experience, together with her reliability and perseverance, has seen her become invaluable to developers who require responsive planning advice and creative solutions to achieve the desired goals.

Melinda has worked on some of Melbourne's most significant master-planned communities, a wide range of industrial, retail and commercial developments, along with research and development precincts, universities, town centres and growth area projects.

Qualifications
BTRP, PIA



SOPHIE JORDAN
DIRECTOR

Sophie Jordan has been practicing as a qualified urban planner for over 25 years, working in both the local government sector and private practice before joining Contour in 2022.

Sophie has particular expertise in special use residential projects, mixed use developments and has worked extensively in the aged care and retirement sector, as well as several social housing and student accommodation developments across metropolitan Melbourne and regional Victoria.

Her breadth of experience has made her a sought after expert witness at VCAT providing independent expert evidence and mediating outcomes for a range of development projects. Sophie has also provided expert planning evidence regularly before the Victorian Commission for Gambling and Liquor Regulation, Heritage Victoria and Planning Panels Victoria.

Qualifications
Bachelor of Planning and Design (Hons)



JOHN HAYSEY
DIRECTOR

John provides expert planning advice to a wide variety of the firm's blue chip clients, covering a broad range of land use and development outcomes throughout the State. He is also an experienced witness at Victorian Civil and Administrative Tribunal and Planning Panel hearings.

His experience includes successfully managing complex planning approvals for key central city and inner urban renewal precincts, including Lendlease's Melbourne Quarter (Batman's Hill) and Victoria Harbour projects, as well as a diverse portfolio of residential, retail, commercial, industrial, educational and hospitality related proposals.

Qualifications
BUPD, VPELA

Our Team



MICHAEL HENDERSON
DIRECTOR

Michael joined Contour in 2018 and has been working as a town planner in both the private and public sectors since 2008; holding senior positions at a number of government organisations.

Michael brings enthusiasm and leadership qualities, together with his detailed understanding of Victoria's planning system and its intricacies, to a wide cross-section of development projects. His expertise includes advice during site acquisition and project design, management of applications and negotiating successful approval outcomes with planning authorities.

Michael has promptly established himself as a valuable and well-respected member of the Contour team.

Qualifications
B App Sci (Planning) (Hons), Grad Dip Property, Dip Leadership & Management, VPELA



MICHAEL ALLSOPP
CHIEF OPERATING OFFICER

As COO, Michael's experience in organisational development, change management, systems improvement, matched with his wider property industry experience, allows him to bridge the gap between the technical and commercial to seamlessly optimise service delivery for both our clients and team growth.

A strategic thinker with invaluable experience spanning land development, transaction management, advisory and operations, Michael's multifaceted approach to business success is underpinned by both internal and client-facing roles in professional services firms.

Michael holds a Bachelor of Geomatic Engineering (Honours) and a Global Executive MBA, highlighting his commitment to excellence in his field.

Qualifications
Bachelor of Geomatic Engineering (Hons), Global Executive MBA



MEL CRAWLEY
CHIEF OF STAFF

Mel has over 25 years of experience as an elite executive administration professional in the Property industry. With a detailed understanding of core business functions and how they integrate, Mel's appointment to Contour in 2024 as Chief of Staff sees her serve as a strategic advisor and operational coordinator.

Mel is adaptable with a strong focus on collaboration and continuous improvement, making her invaluable in supporting Contour to execute their strategic plans and vision.

Qualifications
Dip Business, Accounting, Mini MBA (AIM)



NERELIE PUGH
SENIOR ASSOCIATE

Nerelie joined Contour in 2000 having worked within both local government and private practice since 1995.

Nerelie's systematic and thorough approach to planning has made her an invaluable asset to the Contour team, preparing planning applications for large-scale projects including the Alphington Paper Mill redevelopment. She also assists in the preparation of planning evidence for Tribunal hearings.

Qualifications
B App Sci (Planning)



CHRIS CAWKWELL
SENIOR ASSOCIATE

Chris, a practicing town planner since 2002, brings a wealth of experience from both Victoria and New South Wales, spanning the public and private sectors. Chris has a rich background that includes living and studying in the UK, Hong Kong, and Singapore. This exposure has provided firsthand insight into diverse built environments, cultivating a strong ability to think innovatively.

Chris's expertise encompasses all stages of the development process—from initial site identification and due diligence to procurement assistance, strategic advice, and coordination of large multidisciplinary teams to navigate complex planning approvals and scheme amendments.

Qualifications
BA (Hons) Town and Country, Planning, MTP – Master of Town, Planning MUD – Master of Urban Design, VPELA

Our Team



AMY KING
SENIOR ASSOCIATE

Amy King joined Contour in 2024 and has been a practicing town planner since 2014.

Amy is an experienced senior town planner and people leader with over 15 years local government experience.

A specialist in major projects, Amy's areas of expertise includes large scale industrial, commercial, residential and growth area projects.

Amy's facilitative approach enables her to deliver good outcomes, making her an invaluable member of the Contour team.

Qualifications
B Urban and Regional Planning (Hons)



KONRAD BRUHN
ASSOCIATE

Konrad joined Contour in 2023 and has been a practicing town planner since 2016. Before joining Contour, Konrad spent two years at a private planning and development management consultancy following 6 years as a planner in local government.

Konrad's diverse experience makes him a versatile planner capable of managing commercial, residential and industrial projects for a broad spectrum of clients in urban, rural and greenfield contexts.

Konrad's tenacious approach and passion for solving problems has established him as a valued member of the organisation.

Qualifications
B Urban and Regional Planning (Hons)



DANIELLE DI PIETRO
ASSOCIATE

Danielle has been a practicing town planner since joining Contour in 2011.

Danielle's attention to detail, clear understanding of the planning and development process, and swift ability to resolve issues have made her a valuable contributor to the Contour team, working on a vast range of proposals and due diligence advice including residential, mixed use and commercial projects of all scales.

Qualifications
Masters of Social Science (Planning & Environment);
Bachelor of Business (Property)



LUCY KOLOMANSKI
ASSOCIATE

Lucy has been practicing as a town planner since joining Contour in 2008. She has particular expertise in large institutional, commercial, extractive industry and master-planned development projects. She brings a thorough and strategic approach to her projects and is highly skilled at coordinating large multi-disciplinary teams.

Lucy is a highly accomplished and efficient professional and an integral part of the Contour team.

Qualifications
Bachelor of Planning and Design (Property and Construction) + Bachelor of Urban Planning and Development



MIMI NUCIFORO
ASSOCIATE

Mimi joined Contour in 2023 having worked as a Town Planner in the public sector for 7 years, where she developed a sound knowledge of local government and the Victorian Planning System. Mimi has experience across a range of sectors and has successfully managed planning approvals for a broad range of land use and development outcomes in Melbourne. Mimi is highly motivated, collaborative and solution focused, bringing her detailed understanding of the Victorian Planning System and its intricacies to all projects.

Qualifications
B Urban and Regional Planning (Hons)

Our Team



PAUL VASSILACOS
ASSOCIATE

Paul joined Contour in 2017 as a student and has been a practicing town planner at Contour ever since.

Paul has a detailed understand of the Victorian Planning System and has experience across a broad range of land use and development outcomes in Melbourne.

Paul's humble and approachable personality coupled with his calm and considered approach enables him to provide thorough solution-based advice to some of our biggest clients, making him an invaluable member of the Contour team.

Qualifications
B Urban and Regional Planning (Hons)



DANIELLE COUSENS
ASSOCIATE

Danielle joined Contour in 2023 having worked as an urban planner in private consulting for over 10 years. Danielle has experience across a diverse range of sectors including planning, economic development, property, tourism, and design.

Delivering development outcomes across Australia for both public and private sector Clients has given her the depth of knowledge to work on a broad range of complex planning applications, and assist in the preparation of planning evidence for VCAT and Planning Panels Victoria. Danielle's strategic mindset, adaptability and attention to detail make her an invaluable member of the Contour team.

Qualifications
M Tourism, MUP, B Environments (Landscape Architecture)



JESSICA THOMAS
ASSOCIATE

Jessica began her career as a town planner in 2015, recently transitioning from local government to the Contour team. Bringing practical insights regarding the inner workings of the Council process, navigating feedback, the referrals process, and the political aspects of the permit application process, Jessica has a wealth of experience working on and assessing large scale residential, mixed-use and commercial projects. Jessica is well regarded for her detail-oriented and logical approach to her work.

Qualifications
B Sci, MUP



JACK O'NEILL
ASSOCIATE

Jack specialises in a broad range of town planning expertise across retail, hospitality, mixed-use and significant public realm projects. He has experience across both the public and private sectors as a practicing town planner. Jack brings an open and highly assured personality to the successful navigation of the town planning process from start to finish and specialises in breaking down complex matters to map out bespoke solutions for our clients across a range of projects. He also assists the team with the preparation of expert evidence and providing strategic consultancy regarding matters before VCAT and Planning Panels Victoria.

Qualifications
B Urban and Regional Planning (Hons)

Our Team



DANIELLE GERDTZ
BUSINESS MANAGER



LEONORA MITCHELMORE
RECEPTION

Contact Information

Contour Consultants Australia Pty Ltd
ACN 068 152 714

BUSINESS ADDRESS Level 1, 283 Drummond Street
Carlton VIC 3053

POSTAL ADDRESS PO Box 1040
Carlton VIC 3053

TELEPHONE 03 9347 6100

FACSIMILE 03 9347 6860

COMPANY EMAIL mail@contour.net.au

WEBSITE www.contour.net.au

LINKEDIN www.linkedin.com/company/contour-consultants



